



# Make a smart move

---

Study in Taranaki

**TARANAKI**  
like no other

STUDY   
**TARANAKI**

# Taranaki is New Zealand's most awarded region.

It is the region of choice for students who want a connected and caring community that offers the best of New Zealand on their doorstep. Students thrive in our schools and tertiary institutes, which promote innovative thinking, talent development and individualised learning programmes. In Taranaki, the standard of facilities is high and everything is accessible, no spending hours in traffic! If you want to develop an academic, sporting or cultural talent, this is the place to do it.



## Here are some examples of awards that Taranaki has won:

- Those of us lucky enough to live, work and study in Taranaki already know that it's a great place to be. But don't just take our word for it – Lonely Planet's Best in Travel 2017 yearbook voted us the number two region in the world to visit! It's time you checked Taranaki out.
- Our contemporary art museum, the Len Lye Centre, has picked up multiple awards since opening in July 2015: named the Best Creative Place at the LGNZ Creative New Zealand Excellence Awards, won gold award for Large Brand Identity at Designers Institute Best Design Awards, and was a finalist in the World Architecture Festival Awards.



- Tawhiti Museum in South Taranaki has been judged by TripAdvisor users as the third best museum in New Zealand – behind Te Papa and Auckland Museum. Not surprising for anyone who has visited!
  - In 2009, *North & South* magazine crowned New Plymouth its Top Town – the best place to live in New Zealand.
  - Yarrow Stadium, the region's top rugby facility, was judged the third best stadium to watch a game of rugby – behind Millennium Stadium in Cardiff and Suncorp Stadium in Brisbane – by *Rugby World* magazine in 2009.
  - In 2008, the UN-backed Liveable Communities Awards found New Plymouth was the world's best small city to live in, and its Coastal Walkway was the best community project globally, when it came to making a positive difference to the lives of the local residents.
- 





**TARANAKI**  
*like no other*

New Plymouth.....●

We are here.  
Right in the middle  
of the North Island.

Auckland ●

Wellington ●

Christchurch

Dunedin ●



# Welcome

Kia ora and welcome to Taranaki, on the west coast of New Zealand's North Island.

## Do you want:

- internationally recognised qualifications
- to know the real New Zealand and its culture?

**It can all be achieved in Taranaki!**

**A decision to study  
in Taranaki is a very  
smart move!**





# STUDY TARANAKI

## Talk to us:

We are a hub for international education in our region. Study Taranaki is the brand that promotes education in New Zealand's Taranaki region. If you are looking for a region in New Zealand that offers international students a great experience inside and outside the classroom – talk to us:

**CONTACT:** [www.study.taranaki.info](http://www.study.taranaki.info)

**EMAIL:** [study@venture.org.nz](mailto:study@venture.org.nz)

**PHONE:** +64 6759 6052





# 1

## Six reasons to study in Taranaki

Let our alumni tell you why Taranaki is a great place to study:

### Friendly people, great lifestyle

The region's size, friendly people and great community facilities means it is easy to do all those things that make living in New Zealand special.

Our outstanding natural features are Mt Taranaki and a beautiful accessible coastline. Many of our international students enjoy activities such as hiking and surfing during their stay.



"I like to visit the beach, my homestay is five minutes' walk from the beach and every day after dinner my homestay family and I walk to the beach. I live in the middle of China and there's no sea, it's so beautiful to look at the sea."

**Gloria, China**

---



"You have a mountain with beautiful bush walks just a few kilometres from the sea with some great surf and fishing spots. You have a small city next to farmland and bush to explore and go hunting in... it's magnificent!"

**Jonas, Germany**

---





## 2

### Pathways to employment

Jobs in oil and gas, farming, food technology, nursing, engineering, agri-tech and tourism can be combined with a safe, affordable and fun lifestyle. Others find that their qualifications take them all over the world.

"I was attracted to New Zealand in general and New Plymouth in particular as being the best place to live, and also by the fact that there are lots of opportunities for engineers in the country...[it] was a great place to study and gain my diploma 2014. I don't particularly like big cities and hence would like to continue to stay in New Plymouth. Currently, I am working as a Project Engineer at Fitzroy Engineering."

**Arun Raju, India**

---

"I had an amazing experience... very challenging, but at the same time highly rewarding. I engaged in a new field of studies to complement my skills in project management and from that I have gained knowledge and practical experience. It gave me the opportunity and support to face the challenges of a first New Zealand job".

**Mariana Horigome Tatsumi, Brazil**

---



# 3

## Improve your English – fast!

From the excitement of swimming sports to the privileged insight into Kapa haka (Māori performing arts), our schools offer a real kiwi experience, and because we only have a small number of international students at one time, you get the chance to participate in everything a school has to offer.

"I learnt English in the hostel and in class, which was really helpful and I learnt grammar and writing. In the hostel you share a room with other girls and we talk to each other."

**Stella**, South Korea

---



# 4

## Quality institutions

Students at our secondary schools consistently achieve pass rates above the national average and our vocational tertiary students find employment in exciting roles. Students choose their course of study and focus on subjects they are good at and enjoy. You'll also have the opportunity take part in extracurricular activities and develop your individual talents.

"Take the opportunity, as you don't know where it could lead you. Before doing the Science Fair I was afraid to try new things, but my teachers supported me. The win increased my confidence and opened my eyes to the opportunities that studying in New Zealand can offer."

**Alton**, Malaysia



# 5

## Caring communities

Homstays are carefully chosen and homestay families ensure that their students get out into the community and mix with locals as well as attending regular get-togethers with other international students.

“It’s hard to explain [the relationship between students and teachers] if you haven’t experienced it, but most teachers really trust their students, so the relationship is warmer”

**Jonas**, Germany



“[I arrived] late at night. But Kurtis [local student] was there waiting for the bus ready to welcome us.”

**Anne**, Germany



# 6

## Value for money – make your dollar go further

Taranaki offers the same quality of education for the same type of course as the main centres

Compare average living costs per annum:

Auckland	Wellington	Taranaki
\$24,861	\$24,366	\$21,669

Compare average house rental prices per week:

Auckland	Wellington	Taranaki
\$512	\$408	\$360

You can expect a high standard of accommodation, with hostels and homestays costing around NZ\$250 per week, including meals and utilities. You will pay around \$100-150 per week plus utilities and food per room in private rental accommodation.



## Want to know more?

To see more of what our students have to say about their experience:

<http://study.taranaki.info/Study/Agents/Upload-case-studies.aspx>

For news about international education in Taranaki see:

<http://study.taranaki.info/Study/News.aspx>

To find out about things to do in the region see:

<http://visit.taranaki.info/>

---





## Getting here:

We are just a short direct flight from the three major New Zealand cities, Air New Zealand and Jetstar service the domestic route into Taranaki with regular timetabled flights each week to New Plymouth Airport from:

**Auckland** (47 flights – 45mins)

**Wellington** (32 flights – 50mins)

**Christchurch** (5 flights – 1hr 25min)





## Our culture and heritage

The history of the region's people is diverse and colourful. Māori have lived in the region for around 700 years and the first Europeans arrived in the 1820s. Local Māori still proudly retain their culture, heritage and links to the land. Many schools will include visiting a marae (traditional meeting house) and learning about Māori culture as part of the student experience.

While you are here, there are museums and art galleries to visit throughout the region that celebrate our culture and heritage.

---



## Climate

Taranaki has a temperate climate, making it an ideal place for outdoor activities. Average winter temperatures range between 6 °C and 14 °C, and summer temperatures reach a comfortable 13 °C to 24 °C, with the highest temperature recorded as 30 °C.

---



## Activities

Taranaki boasts a busy events calendar. From art and culture to sporting events, there's something for everyone. Students also like to watch movies, play sport, shop, swim, dance, skate, sing and play music. There are excellent facilities and clubs for a wide range of hobbies throughout the region.



## Eating out

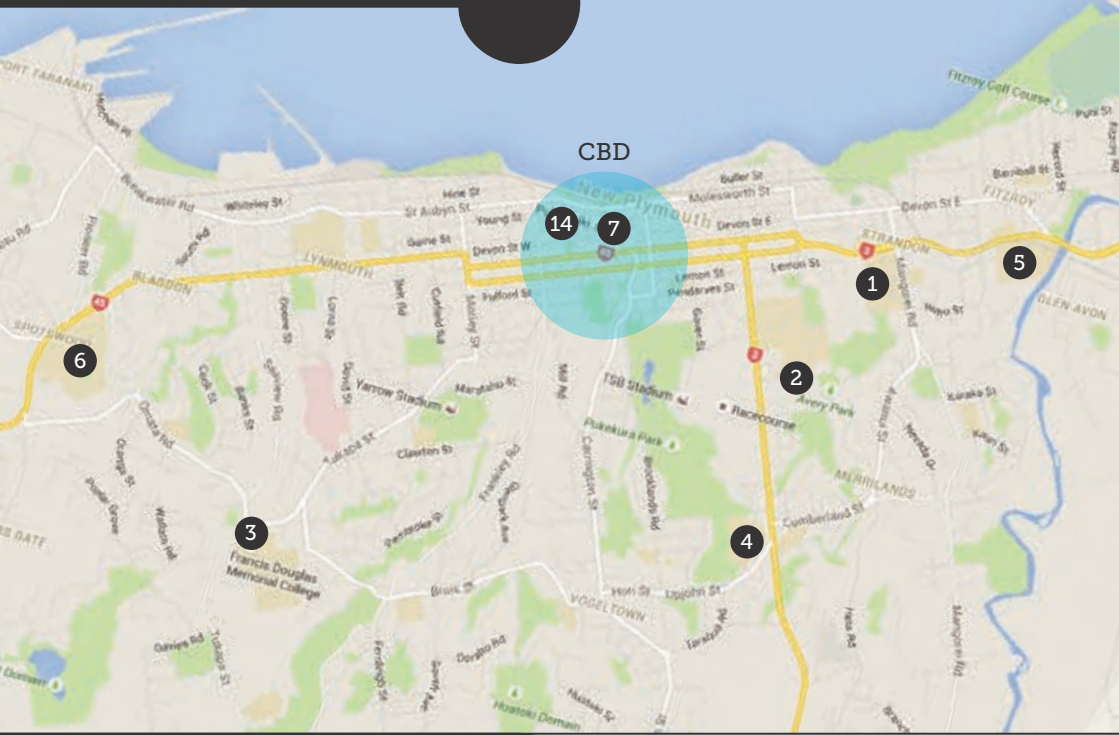
If you like to eat out, there's a food choice for everyone – from American style milkshakes and gourmet burgers, to European, Asian and Mexican food, plus an impressive range of cafes with award-winning coffee, decadent cakes, patisserie, sweets and ice-creams.

## Getting around

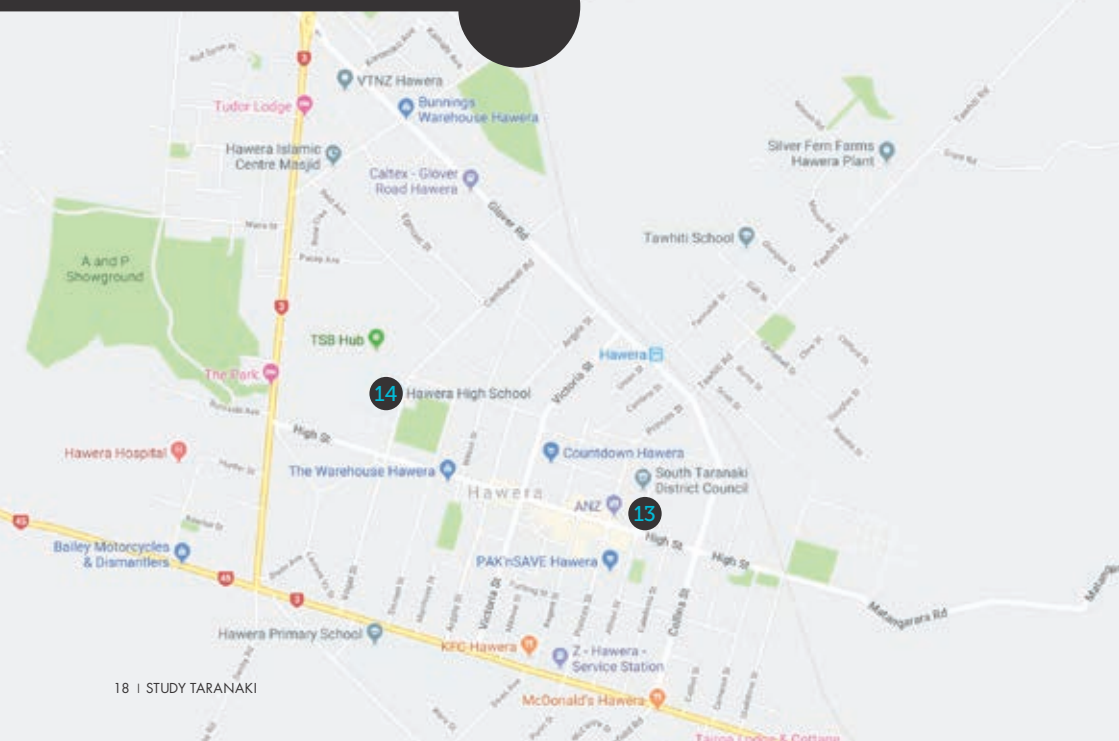
With a great cycle and walking network, and well managed national highways, getting around the region is easy. But if you are without personal transportation, the Taranaki Regional Council operates Citylink, School and Southlink bus services – connecting the region. National intercity bus services also operate daily.



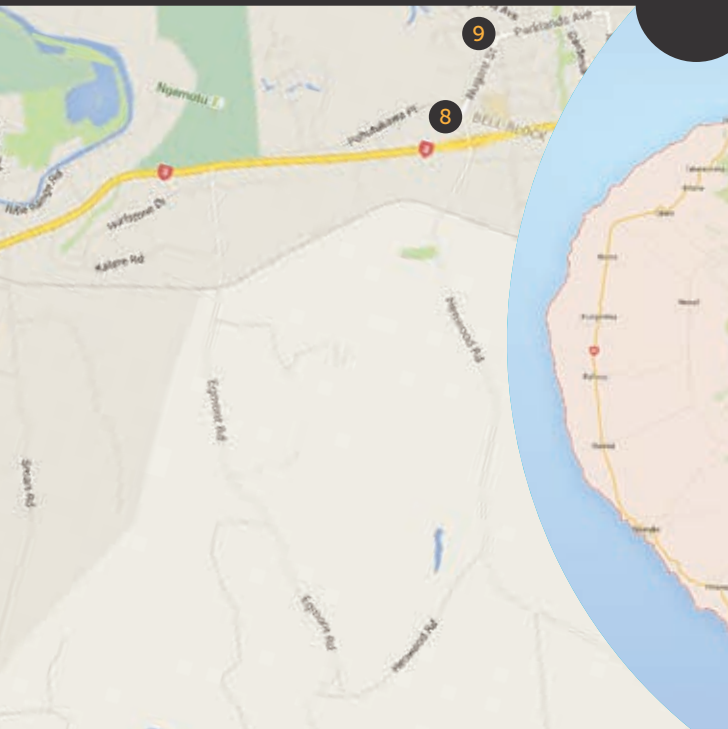
# New Plymouth



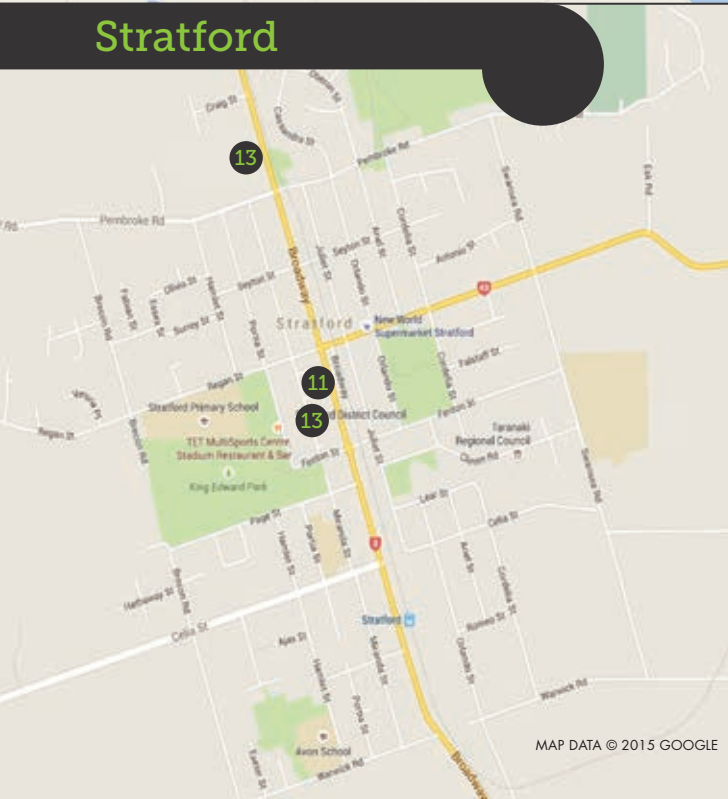
# Hāwera



# Taranaki



# Stratford



## Map Key

- 1 New Plymouth Girls' High School
- 2 WITT
- 3 Francis Douglas Memorial College
- 4 Highlands Intermediate
- 5 Sacred Heart Girls' College
- 6 Spotswood College
- 7 Puke Ariki Museum & Library
- 8 PIHMS
- 9 Bell Block Library
- 10 New Plymouth Airport
- 11 Stratford Library
- 12 Taranaki Diocesan School for Girls
- 13 Bus Depot(s)
- 14 Hāwera High School



# Intermediate

An intermediate school caters for years 7 and 8 (ages 11 and 12) only. Intermediate schools are a middle school option to act as a bridge between primary and secondary style learning.

---





## Highlands Intermediate

**Type:** Co-educational Intermediate School

**Website:** [www.highlands.school.nz](http://www.highlands.school.nz)

**Email:** [office@highlands.school.nz](mailto:office@highlands.school.nz)

**Phone:** +64 6 758 4162

**Accommodation:** Homestay

Highlands Intermediate is a large intermediate school close to the centre of New Plymouth city. It is set in large grounds with established trees, gardens and large playing fields.

Highlands Intermediate ensures students are fully immersed in the life of the school. We encourage them to become involved in sport, music, camping experiences, productions and to have fun and make new friends. We welcome international students to join our friendly learning environment and have been hosting students and welcoming their families for many years now. The local students are from a diverse range of cultures, which makes it easy for international students to make new friends.

We have high expectations for all of our students and want them to achieve. International students are provided with extra learning assistance in curriculum areas to improve their English and gain a better understanding of New Zealand culture. Our international students leave Highlands Intermediate fully prepared for secondary school, whether in New Zealand or back in their home country.



# Secondary

**Secondary school is years 9 to 13**  
Francis Douglas Memorial College  
Hāwera High School  
New Plymouth Girls' High School  
Sacred Heart Girls' College  
Spotswood College  
Taranaki Diocesan School for Girls



## Francis Douglas Memorial College

**Type:** Catholic Boys' High School

**Website:** [www.fdmc.school.nz](http://www.fdmc.school.nz)

**Email:** [office@fdmc.school.nz](mailto:office@fdmc.school.nz)

**Phone:** +64 6 753 6149

**Accommodation:** Boarding and homestay



Francis Douglas Memorial College has a reputation for providing personalised education focusing on academic excellence. Our NCEA pass rates are consistently well above the national average.

Our school is committed to creating a strong academic purpose and will do everything to ensure that the academic, co-curricular and social aspects of school, hostel and homestay are as rewarding as possible. We have very high expectations for all of our students, and with small class sizes we monitor progress very closely. In addition to regular classes, all boarding students have two hours of supervised homework each night. Parents receive four reports per year.

We welcome international students as part of our school community and offer a caring and friendly atmosphere. The presence of international students at the college enriches the school community and we value this cultural diversity. Students have the opportunity to engage in a wide range of extra-curricular activities including music, sport, drama and an excellent outdoors programme.



## Hāwera High School

**Type:** Co-educational High School

**Website:** [www.hawerahs.school.nz](http://www.hawerahs.school.nz)

**Email:** [enquiries@hawerahs.school.nz](mailto:enquiries@hawerahs.school.nz)

**Phone:** +64 6 278 4145

**Accommodation:** Homestay



Hāwera High School has proudly served the South Taranaki community since 1919. Our High School provides a variety of academic, vocational, cultural and sporting opportunities to our students. Our school is a safe and supportive environment, which promotes opportunities to excel in academic pathways with a broad curriculum.

With a roll of approximately 750 students, Hāwera High School caters for a wide range of requirements. We have special programmes, including gifted and talented programmes, excellent links with employers and have internationally renowned sporting coaches on our staff.

Hāwera High School sets high standards for our students, which are guided by the school's specific values of Honesty, Achievement, Well-being, Excellence, Respect, and Attitude. These values promote self-reflection and awareness of behaviours, being considerate to others and the environment, and is committed to being lifelong learners.

We welcome enquiries from international students, their families and education agents. We can cater for both groups and individuals and will work with you to develop a study programme that best suits your needs.

We offer NCEA with a full range of subject areas.





# New Plymouth Girls' High School

Type: Girls' High School

Website: [www.npghs.school.nz](http://www.npghs.school.nz)

Email: [reception@npghs.school.nz](mailto:reception@npghs.school.nz)

Phone: +64 6 757 3899

**Accommodation:** 150 bed school hostel, years 9–13 in a warm, caring and secure environment within a modern complex with motel-style units.

New Plymouth Girls' High School offer the opportunity to be educated at one of New Zealand's oldest, most prestigious state girls' schools.

Our school is large enough to have great opportunities, yet small enough to care and develop each of our girls as a unique individual.

## **Our platform of traditional values encourages:**

- Respect, (Whakamana)
- Responsibility (Haepapa)
- Positive relationships (Whanaungatanga)

The school campus is set within large attractive grounds and offers a superb hostel on-site and excellent homestay facilities. We are the largest school in Taranaki, with the most international students, and the most extensive range of learning programmes. International students have a consistently high standard of pastoral care, and interact with students from diverse cultural backgrounds.

We create confident young women of outstanding character and our students consistently achieve exceptional results in national qualifications. Each young woman will have the opportunity to develop the necessary knowledge and skills for the twenty-first century, through their academic programme and a wide range of sporting and cultural opportunities to enhance their academic programme.





## Sacred Heart Girls' College

**Type:** Catholic Girls' High School  
**Website:** [www.shgcnp.school.nz](http://www.shgcnp.school.nz)  
**Email:** [admin@shgcnp.school.nz](mailto:admin@shgcnp.school.nz)  
**Phone:** +64 6 758 5023  
**Accommodation:** Homestay

At Sacred Heart Girls' College, we care for our students personally.

Staff are highly qualified and our Vertical Form and House systems ensure that students have the opportunity to relate to all groups, and their academic, physical and spiritual growth is developed and nurtured.

We are proud of our academic achievements, the wide variety of sporting activities in which our girls participate and the family atmosphere throughout the college community. The college buildings are well maintained on an attractive, spacious site. Since the college was established, its motto "Age Quod Agis" (whatever you do, do to the best of your ability), has been one that we are proud to live by.



## Spotswood College

**Type:** Co-educational High School  
**Website:** [www.spotswoodcollege.school.nz](http://www.spotswoodcollege.school.nz)  
**Email:** [admin@spotswoodcollege.school.nz](mailto:admin@spotswoodcollege.school.nz)  
**Phone:** +64 6 751 2416  
**Accommodation:** Homestay



Spotswood College is the only co-educational secondary school in New Plymouth, located 4km from the city centre on a bus route. We provide the very best pastoral care for students. A dedicated international team, with over 20 years' experience, are available at all times to ensure the safety and wellbeing of students. We also support international students with native speaker teachers in Spanish, French, and Japanese.

Academic subjects and timetables are tailored to suit student's individual needs. Art is a strength of the school – we achieve outstanding results. Most recently, nine students received scholarships, with four of these being ranked in the top 1% in New Zealand.

International students participate in activities outside of the classroom. These include individual and team sports, orchestra and jazz band, Te Reo Māori – kapa haka performance, drama, surfing and hiking. The school facilities include a swimming pool, beach volleyball courts, sports fields, a library and a music suite with recording studio.

We hope you choose Spotswood College for study and a true New Zealand experience... we are excited to meet you!



## Taranaki Diocesan School for Girls

**Type:** Taranaki Diocesan High School

**Website:** [www.taranakidio.school.nz](http://www.taranakidio.school.nz)

**Email:** [office@taranakidio.school.nz](mailto:office@taranakidio.school.nz)

**Phone:** +64 6 765 5333

**Accommodation:** Boutique boarding. Single room with separate bathroom, all meals included. And quality homestays for exeat weekends and holidays.



Established in 1914, Taranaki Diocesan is a boutique school for girls, offering small classes and a modern boarding environment with a single room. The school is safe and friendly, with a family atmosphere. We are only 30 minutes from New Plymouth, at the edge of Mount Egmont National Park.

Taranaki Diocesan academic strengths are performing, visual arts and science. Girls gain entrance to universities of their choice and their results in national examinations are outstanding. We are the regional champions in both Young Enterprise Business Studies and Māori performing arts. We encourage each girl to reach her full potential. Extra-curricular opportunities include cultural performances, sports teams, camps, outdoor education, volunteering opportunities and an International Committee.

Our international students enjoy their experience, as boarding creates lifelong friendships, and superior English language skills. Some of our international students have gone on to gain leadership roles. New international students are welcomed by a student buddy. Students are supported by our International Dean who also arranges individualised English lessons.



# Tertiary

Pacific International Hotel Management School

Western Institute of Technology at Taranaki (WITT)





## Pacific International Hotel Management School



**Type:** Private Training Institute

**Website:** [www.pihms.ac.nz](http://www.pihms.ac.nz)

**Email:** [marketing@pihms.ac.nz](mailto:marketing@pihms.ac.nz)

**Phone:** +64 6 968 1421

**Accommodation:** Qualmark 4-star hotel accommodation, twin share. Homestay accommodation is available for English Language students.

PIHMS offers NZQA qualifications from Diploma through to Masters in Hotel and Tourism Management. The learning environment includes lecture-style delivery and operational training, whereby students will be involved in running all departments of the hotel school, from Food and Beverage, Rooms Division and Managerial roles.

The programmes at PIHMS also include paid internships (minimum six months) in leading hotels throughout New Zealand. Internship success leads to 97% of PIHMS graduates securing career positions on, or soon after, graduation.

Through PIHMS Industry Advisory Board students form strong networks with other international schools and industry. Together we are developing quality benchmarking systems, sharing information and resources, researching, publishing and convening industry conferences, as well as providing career and education pathway options for our students.



## (WITT) Western Institute of Technology at Taranaki

**Type:** Higher Education

**Website:** [www.witt.ac.nz](http://www.witt.ac.nz)

**Email:** [info@witt.ac.nz](mailto:info@witt.ac.nz)

**Phone:** +64 6 757 3100

**Accommodation:** Homestay and student hostel on campus

The Western Institute of Technology at Taranaki (WITT) is a quality government-owned tertiary education institution.

WITT is the only state tertiary institution in Taranaki and offers courses from certificate to degree level across a wide range of areas, including business, nursing, hospitality, Māori, humanities, media, art, electrical, engineering, automotive, welding, carpentry, architecture, computing, fitness, hairdressing, beauty therapy, make-up artistry, social sciences and agriculture. WITT also specialises in English language tuition and foundation programmes for overseas students.

The campus contains a cafeteria, art blocks, computer labs, engineering workshops, hospitality facilities (including a training restaurant and cafe) and two student accommodation blocks offering modern and affordable living.

WITT focuses its courses particularly on vocational outcomes, and seeks to ensure that graduates are able to enter the workforce successfully or to advance their careers through further education or training.

Our well-qualified staff are dedicated to helping our students achieve positive learning outcomes. Our qualifications are well-regarded both regionally and nationally.

WITT's strong relationships with industry ensure that the technical skills and knowledge students learn in the classroom meet the needs of employers.



## To find out more about the region

[www.taranaki.info](http://www.taranaki.info)

**Email:** [study@venture.org.nz](mailto:study@venture.org.nz)

**Phone:** +64 6759 5150

While every attempt has been made to ensure accurate information at the time of going to press, the publishers accept no responsibility for supplied information or omissions. All images supplied by schools were done so under the understanding that all necessary permissions were obtained.

STUDY   
**TARANAKI**

**TARANAKI**  
like no other